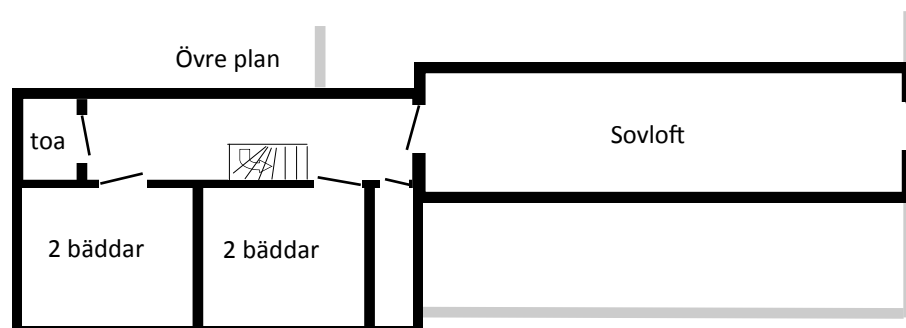
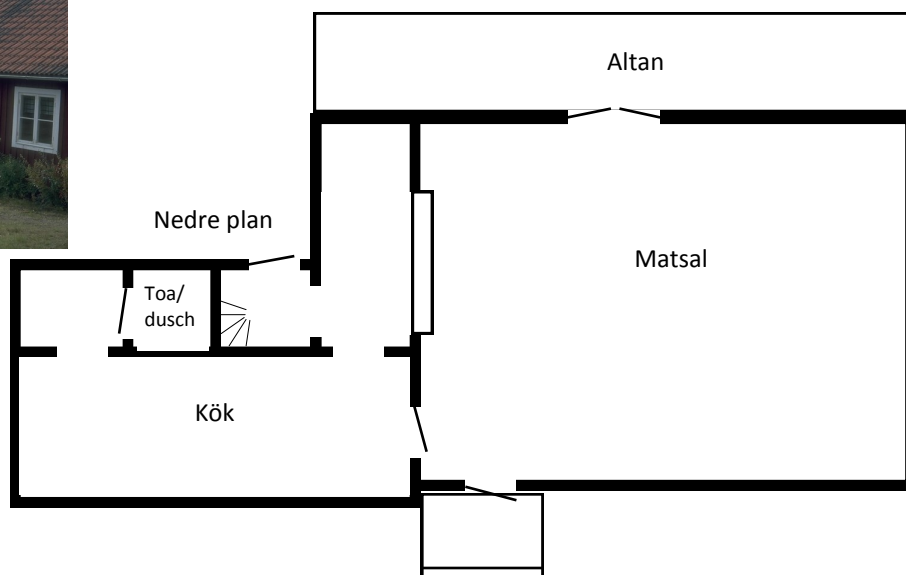


Rums- och bäddplan



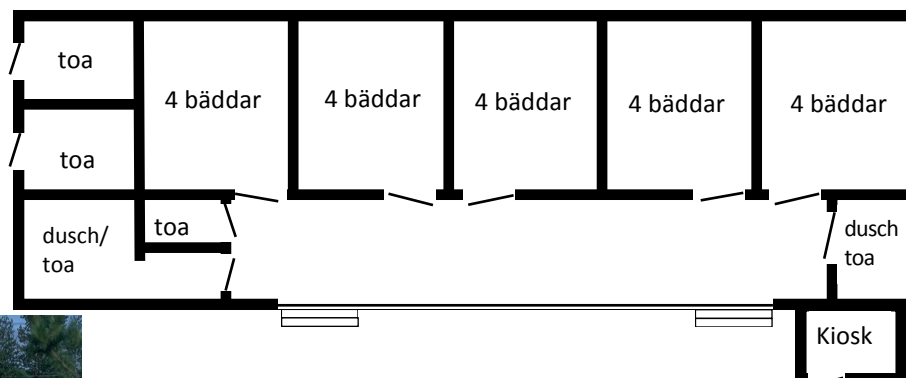
Storstugan

2 rum x 2 bäddar
sovloft 6 bäddar.
=10 bäddar



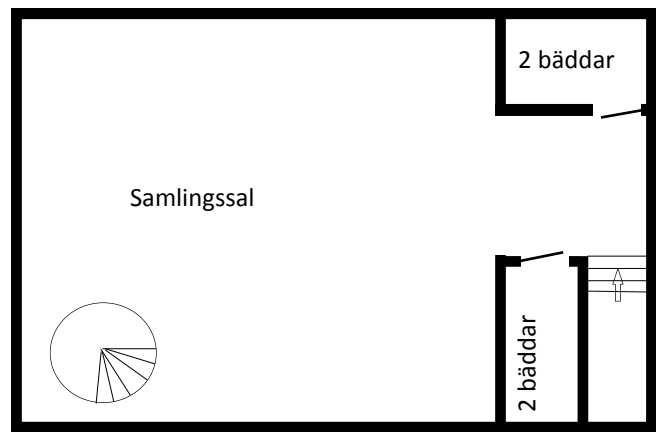
Långstugan

5 rum x 4 bäddar
=20 bäddar

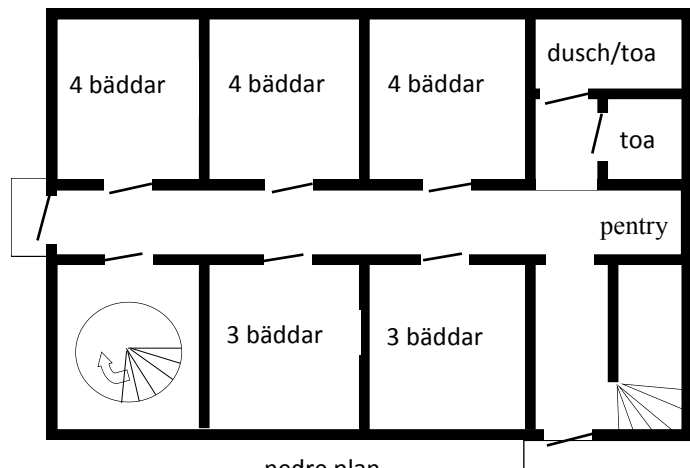


Backstugan

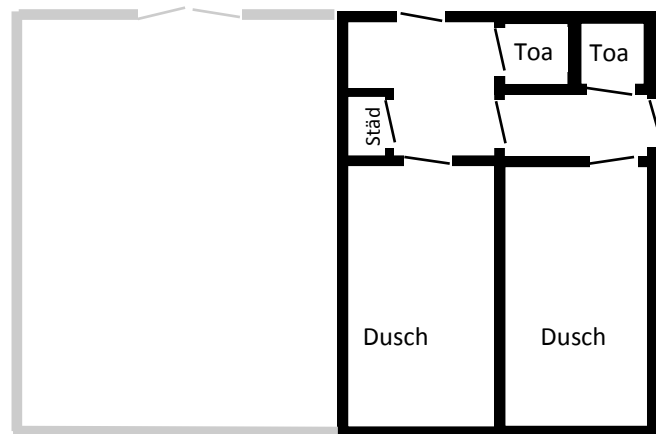
3 rum x 4 bäddar + 2 rum x 3 bäddar
+ 2 rum x 2 bäddar
=22 bäddar



övre plan



nedre plan

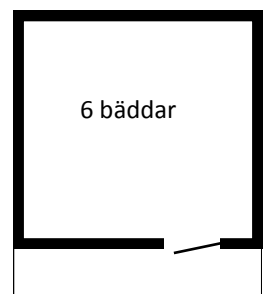


källarplan

Småstugor



5 stugor x 6 bäddar
1 stuga x 3 bäddar
=33 bäddar



Totalt 85 bäddar